



# MONTHLY MEMBERSHIP PROGRESS REPORT

District 21 C

Results as of: 6/30/2017

GMT: OPEN

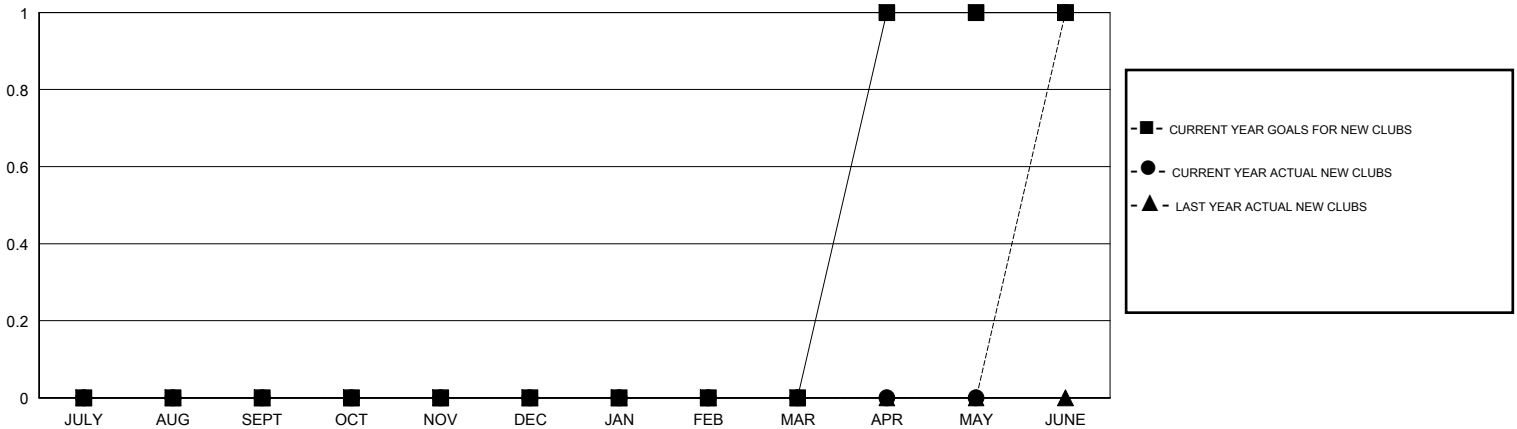
LOCATION ARIZONA

GMT CA

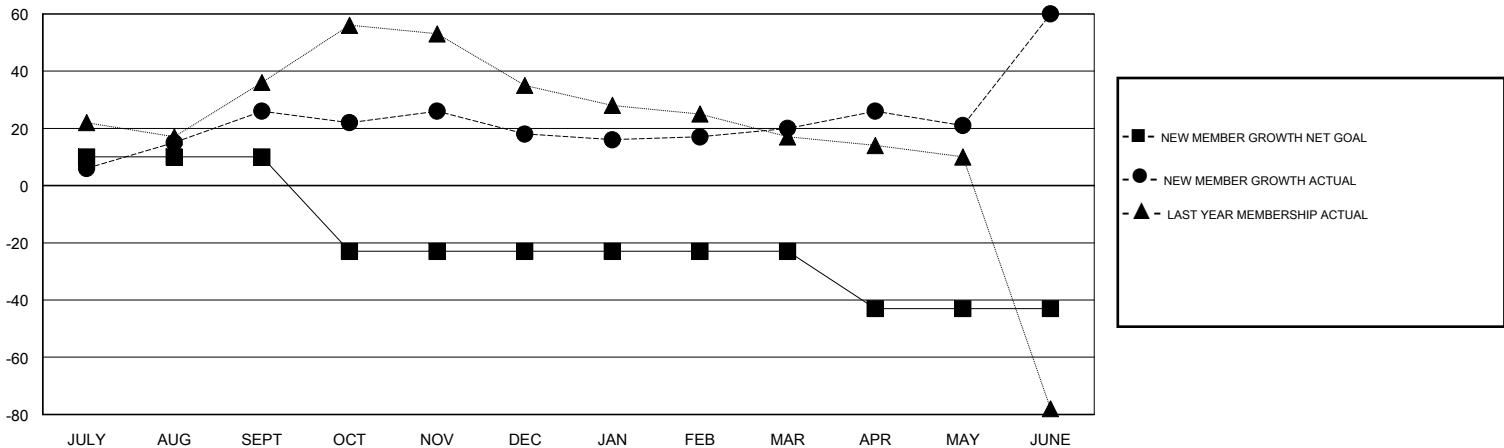
Clubs			
RESULTS FOR 2016-2017			
QUARTER	NEW CLUB GOAL	NEW CLUBS	DROPPED CLUBS
JULY/AUG/SEPT	0	0	0
OCT/NOV/DEC	0	0	0
JAN/FEB/MAR	0	0	0
APR/MAY/JUNE	1	1	0

Members			
RESULTS FOR 2016-2017			
QUARTER	NEW MEMBER GROWTH NET GOAL (not reinstated or transfers)	NEW MEMBER GROWTH ACTUAL (not reinstated or transfers)	DROPPED MEMBERS ACTUAL (including transfers)
JULY/AUG/SEPT	10	94	68
OCT/NOV/DEC	-33	40	48
JAN/FEB/MAR	0	30	28
APR/MAY/JUNE	-20	120	80

GOALS AND ACTUAL NEW CLUBS CUMULATIVE



GOALS AND ACTUAL MEMBERS CUMULATIVE



DROPPED CLUBS: 0	33 CLUBS OF 45 ADDED 1 OR MORE NEW MEMBERS	<u>GENDER DISTRIBUTION</u>
DROPPED MEMBERS	<a href="#">CLICK HERE FOR CUMULATIVE MEMBERSHIP DATA</a>	MALE 672 (58.28%)
DECEASED 15		FEMALE 481 (41.72%)
CLUB CANCELLED 0		TOTAL FAMILY UNIT MEMBERS 332
OTHER 209		FAMILY MEMBERS PAYING HALF DUES 177
TOTAL 224		